

Medical Ids



102405
Stainless Steel Men's
Medical ID With Stretch Band
Engraving area: 1 1/4" x 1/2" (3.2 x 1.3 cm)



713050
Stainless Steel Women's
Medical ID Bracelet With Stretch Band:
Engraving area: 1" x 3/8" (2.5 x 1 cm)



102465
Gold Plated Men's
Medical ID With Stretch Band:
Engraving area: 1 1/4" x 1/2" (3.2 x 1.3 cm)



713650
Gold Plated Women's
Medical ID Bracelet With Stretch Band:
Engraving area: 1" x 3/8" (2.5 x 1 cm)



116405
Medical ID Necklace:
3/4" Diameter (2 cm)



212120
Silver Plated
Medical Charm:
1/4" (.7 cm)



212130
Gold Plated
Medical Charm:
1/4" (.7 cm)



992034
Child's Medical ID Bracelet:
Engraving area: 1" x 1/2" (2.5 x 1.3 cm)



434611
Sterling Silver Women's
Medical ID Bracelet:
Engraving area: 1 1/2" x 1/2" (3.6 x 1.3 cm)



434612
Sterling Silver Man's
Medical ID Bracelet:
Engraving area: 1 1/2" x 1/2" (3.6 x 1.3 cm)



110200
Silver Plated Men's Medical ID Bracelet:
Engraving area: 1 1/4" x 1/4" (2.2 x 1.2 cm)



110230
Gold Plated Men's Medical ID Bracelet:
Engraving area: 1 1/4" x 1/2" (3.2 x 1.3 cm)



212400
Silver Plated Women's
Medical ID With Charm:
Engraving area: 1 1/4" x 1/2" (3.2 x 1.3 cm)



992036
Baby Boy's Medical ID Bracelet:
Engraving area: 3/4" x 3/4" (2 x 2 cm)



992035
Baby Girls's Medical ID Bracelet:
Engraving area: 3/4" x 3/4" (2 x 2 cm)



212430
Gold Plated Women's
Medical ID With Charm:
Engraving area: 1 1/4" x 1/2" (3.2 x 1.3 cm)

Jewelry



300
340g S5
Sterling Charm:
1/2" (1.3 cm)



480005
Sterling Silver
Circle Charm:
1/2" (1.3 cm)



440000
Sterling Silver
Boy's Head Char-
1/2" (1.3 cm)



443000
Sterling Silver
Girl's Head Char-
1/2" (1.3 cm)



992043
Sterling Silver
Oval Charm:
5/8" x 1/2" (1.5 x 1.3 cm)



2038
99g Plat
Heart Charm:
1/2" (1.3 cm)



92037
9g Gold Plated
Circle Charm:
1/2" (1.3 cm)



992040
Gold Plated
Boy's Head Char-
1/2" (1.3 cm)



992039
Gold Plated
Girl's Head Charm:
1/2" (1.3 cm)



992042
Gold Plated
Oval Charm:
5/8" x 1/2" (1.5 x 1.3 cm)

Jewelry is enlarged to show detail



912301
Large Pewter Dog Tag
With Rope Border Design:
2" x 1" (5.1 x 2.5 cm)



912300
Large Pewter Dog Tag:
2" x 1" (5.1 x 2.5 cm)



912400
Small Pewter Dog Tag:
1 1/2" x 3/4" (3.6 x 2 cm)



902044
Sterling Silver Dog Tag:
2" x 1" (5.1 x 2.5 cm)



902041
Gold Plated Dog Tag:
2" x 1" (5.1 x 2.5 cm)



112000
Pewter Oval
Locket:
1 1/2" x 1" (3.8 x 2.5 cm)



116000
Pewter Heart
Locket:
1" x 7/8" (2.5 x 2 cm)



Mini Pewter Heart
Locket:
3/4" x 3/4" (1.9 x 1.9 cm)



880000
Pewter Circle Pendant:
1" Diameter (2.5 cm)



117000
Pewter Heart Pendant:
5/8" x 5/8"
(1.5 x 1.5 cm)

Jewelry



113520
Silver Plated Men's ID Bracelet:
Engraving Area: 1 3/4" x 1/2"
(4.5 x 1.3 cm)



992030
Gold Plated Girl's ID Bracelet
With 2 Heart Cut-Outs:
Engraving area: 3/4" x 1/2"
(1.9 x 1.3 cm)



992025
Silver Plated Men's Classic ID Bracelet:
Engraving area: 1" x 1/2" engraving area
(2.5 x 1.3 cm)



113530
Gold Plated Men's ID Bracelet:
Engraving Area: 1 3/4" x 1/2"
(4.5 x 1.3 cm)



992031
Silver Plated Girl's ID Bracelet
With 2 Heart Cut-Outs:
Engraving area: 3/4" x 1/2"
(1.9 x 1.3 cm)



992026
Gold Plated Men's Classic ID Bracelet:
Engraving area: 1" x 1/2"
(2.5 x 1.3 cm)



668000
Pewter Cuff with Design & Chain:
Engraving area: 1" x 3/4"
(2.5 x 1.9 cm)



992024
Gold Plated Women's Oval ID Bracelet:
Engraving area: 1" x 1/2"
(2.5 x 1.3 cm)



992032
Silver Plated Child's Classic ID Bracelet:
Engraving area: 1" x 1/2"
(2.5 x 1.3 cm)



456000
Pewter Cuff Bracelet:
2 1/2" x 1 5/8" (6.4 x 4 cm)



992027
Brushed Steel Men's Tech. One ID Bracelet:
Engraving Area: 1 3/4" x 1/2"
(4.5 x 1.3 cm)



992033
Gold Plated Child's Classic ID Bracelet:
Engraving area: 1" x 1/2"
(1.5 x 1.3 cm)



750730
Silver Plated Cufflinks
Engraving area: 1/2" x 3/4" (1.3 x 1.9 cm)



750735
Gold Plated Cufflinks
Engraving area: 1/2" x 3/4" (1.3 x 1.9 cm)



261120
Silver Plated Women's
Bracelet With Heart Cut-Out:
Engraving area: 1 1/3" x 1/4"
(3.4 x .6 cm)



261130
Gold Plated Women's
Bracelet With Heart Cut-Out:
Engraving area: 1 1/3" x 1/4"
(3.4 x .6 cm)



026020
Silver Plated Rectangle Cufflinks:
Engraving Area: 1/2" x 3/4" (1.3 x 1.9 cm)



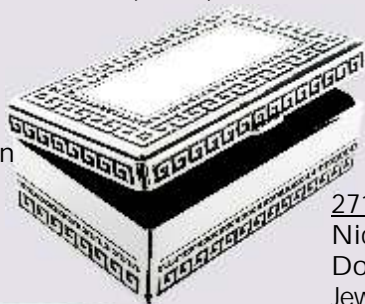
220240
Silver Plated Piano Jewelry Box
 With Fixed Keys & Prop-Open Lid:
Plays "Music of the Night" or
"Over the Rainbow" when
wound with bottom key:
 Size: 5" x 4 1/2" (12.7 x 11.4 cm)

220030
Silver Plated Heart Box
 With Royal Blue Velvet Lining:
 Size: 3 1/2" x (8.9 cm)



035310
Pewter Heart
Box with Crystals:
Velvet Lining:
 Size: 2 1/2" (6.4 cm)

261630
Silver Plated
Greek Key Design
Jewelry Box:
Non-tarnish
 Size: 2 1/4 x 3 1/2"
 (5.7 x 8.9 cm)



271020
Nickel Plated
Double Velvet
Jewelry Box Small:
Non-tarnish
 Size: 2 3/4" x 5"
 (7 x 12.7 cm)



260310
Silver Plated
Nantucket Basket
Box With Handle &
Removable Lid:
Non-tarnish
 Size: 3" x 4" (7.6 x 10 cm)

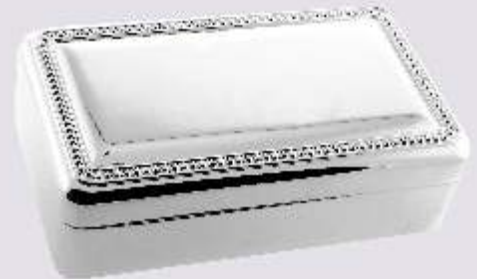
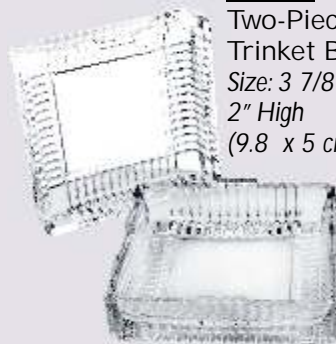


260100
Silver Plated Oval Box:
 Size: 4 1/2" x 2 3/4" (11.4 x 7 cm)

220200
Silver Plated Victorian
Box With Hinged Lid &
Lion Head Feet:
 3" x 6" (7.6 x 15.2 cm)



751860
Two-Piece Glass
Trinket Box:
 Size: 3 7/8" Square,
 2" High
 (9.8 x 5 cm)



271030
Nickel Plated Double Velvet
Jewelry Box Large:
Non-tarnish
 Size: 5 1/4" x 4" (13.3 x 10.2 cm)



270000
Mahogany Jewelry Box
with Pewter Plate:
 Size: 4 3/4" x 1 3/4"
 (12 x 4.5 cm)